

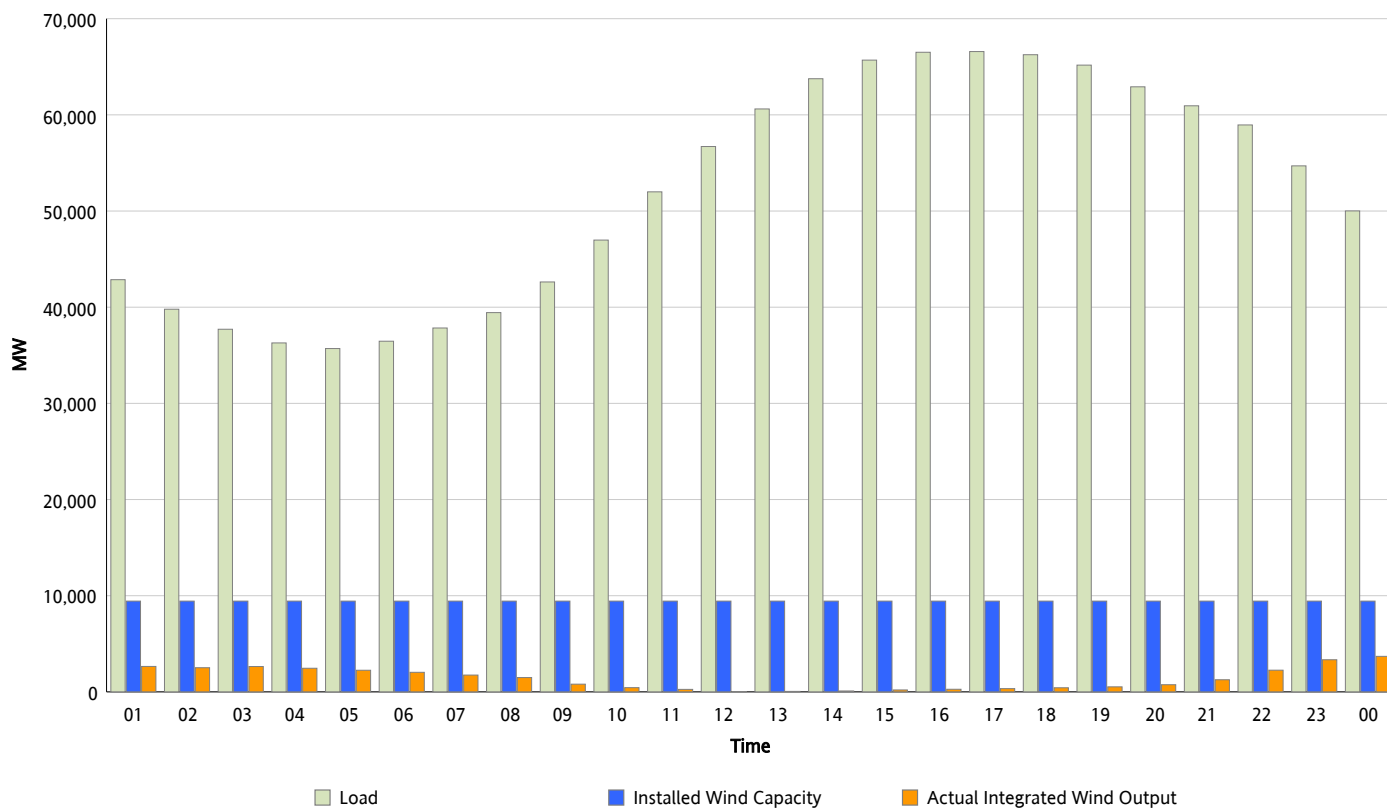


ERCOT Grid Operations

Wind Integration Report : 06/26/2012

Peak Load	66,583 MW
Load Peak Hour (HE)	17
Wind Over Peak	339 MW
Wind Record 06/19/12	8,368 MW
Max Wind Value*	3,819 MW
Wind Peak Time	23:58
Wind Integration %	7.95 %

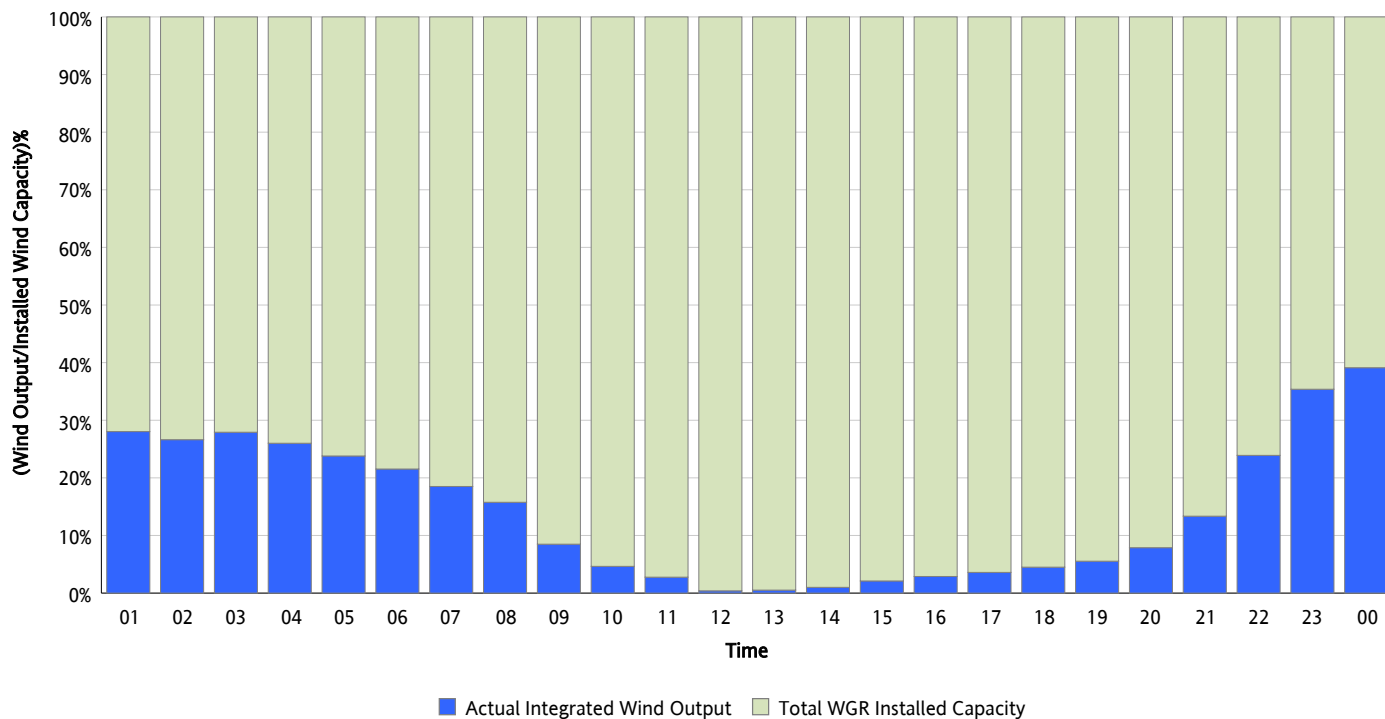
Hourly Average Actual Load vs. Actual Wind Output
06/26/2012



** Wind Record and Wind Max represent instantaneous values and the rest of the values are integrated over the hour*

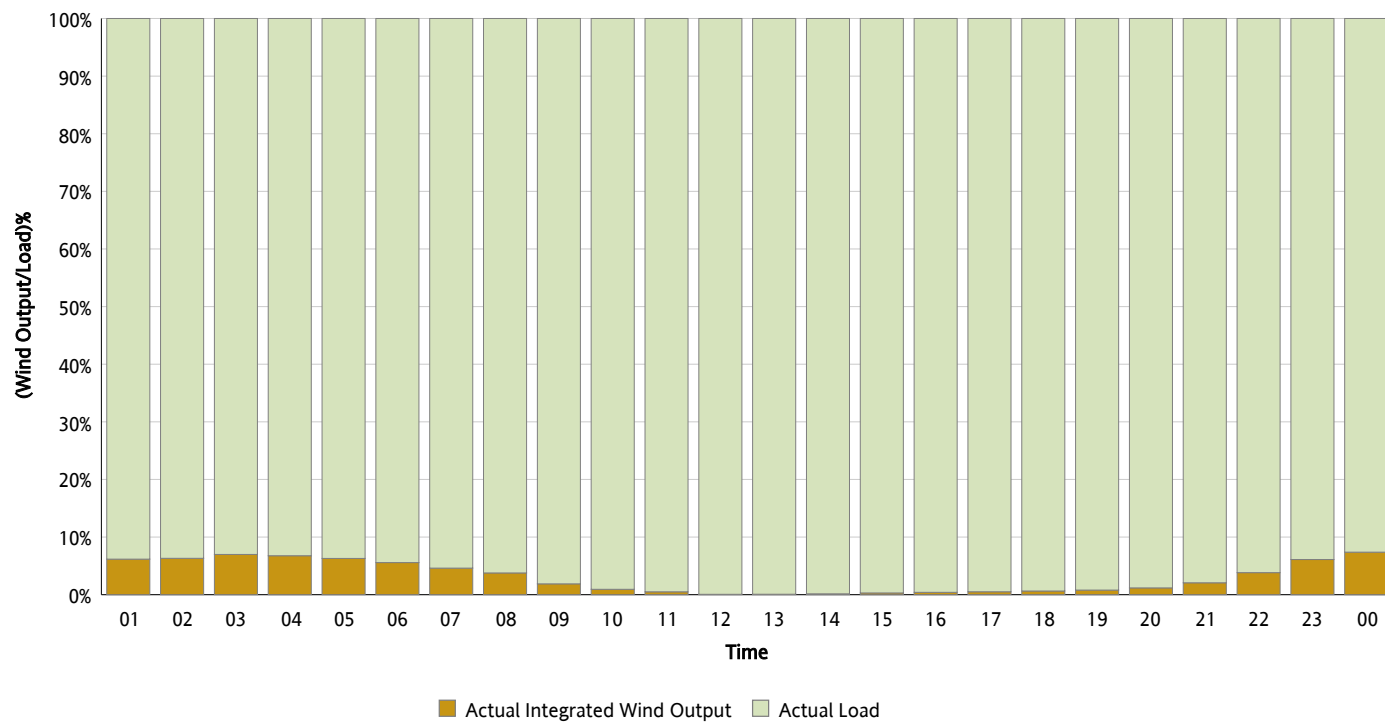
Actual Wind Output as a Percentage of the Total Installed Wind Capacity

06/26/2012



Actual Wind Output as a Percentage of the ERCOT Load

06/26/2012



ERCOT Load vs. Actual Wind Output

06/19/2012 - 06/26/2012

